

Clubhouse facilities include:

Reception area/entryway

Main room 43' x 28'

Lesser room 34' x 18'

Kitchen

Men's and Women's restrooms

Coat room



Entry Foyer



Main Room: 43' x 28'

Capacity: seated at tables - 110;

other - 150

Balcony

Gas fireplace with copper hood

Bay windows

Lights on dimmers

4 - 36" round tables

with 4 padded chairs each

8 - 2' x 2' low tables

14' x 10' dance floor



Lesser Room: 31' x 18'

Capacity: dining - 40; other - 50

2 - 3' x 6' covered tables

with 8 padded chairs

2 - 36" square covered tables

2 - 36" square/round tables

2 - 18" x 48" covered tables

2 - 3' x 6' folding leg tables

4 leather couches

1 large glass coffee table

Available for use in either room:

2 - 3' x 6' folding leg tables

stacking chairs

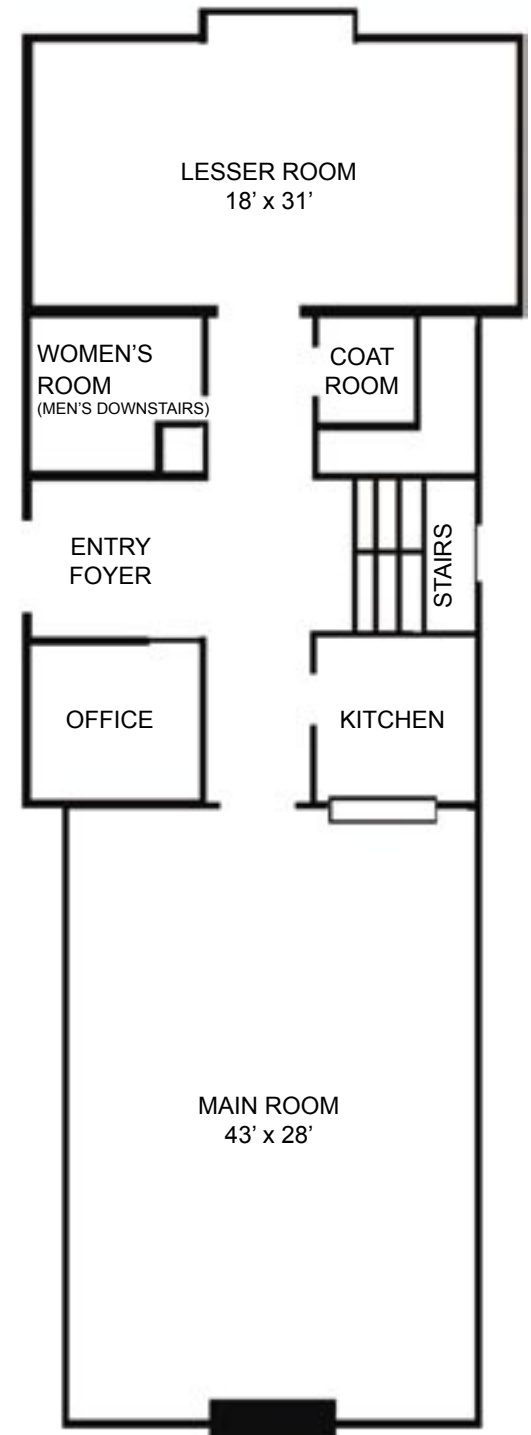
Some furniture may be moved from

one room to another. Contact club-

house manager for permission.



Kitchen with pass through to
main room.



Weekday hours: 8:00 AM-11:00 PM
Weekend hours: 8:00 AM-12:00 AM

Cable TV connection and wireless broadband internet access are available.

The clubhouse may be rented for the entire weekend (Friday evening through Sunday.)

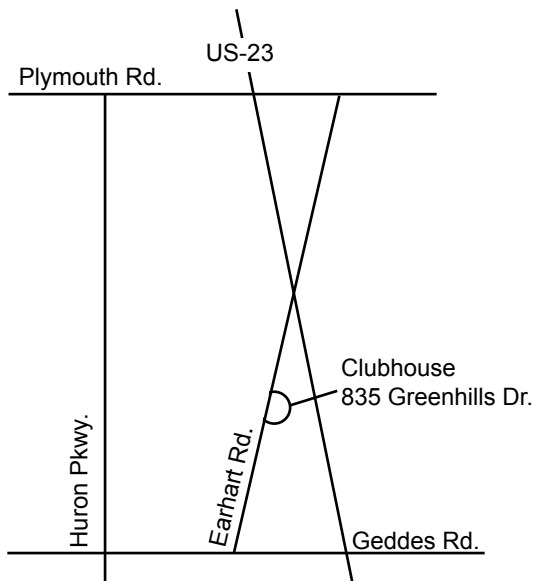
The clubhouse does not provide food, beverages, cooking utensils or dishes.

Cleaning after the event is the responsibility of the renter. A check list will be provided. Some cleaning supplies are available.

No smoking. Alcohol is permitted for guests over 21.

The pool is not available for rental use.

A damage deposit of \$125 is required.



Earhart Village Homes Association
c/o Clubhouse Manager
835 Greenhills Drive
Ann Arbor, MI 48105

Earhart Village Clubhouse



A charming and flexible
community house located in
Earhart Village, Ann Arbor

835 Greenhills Drive
Ann Arbor, MI 48105
734-769-2407
www.earhartvillage.com